



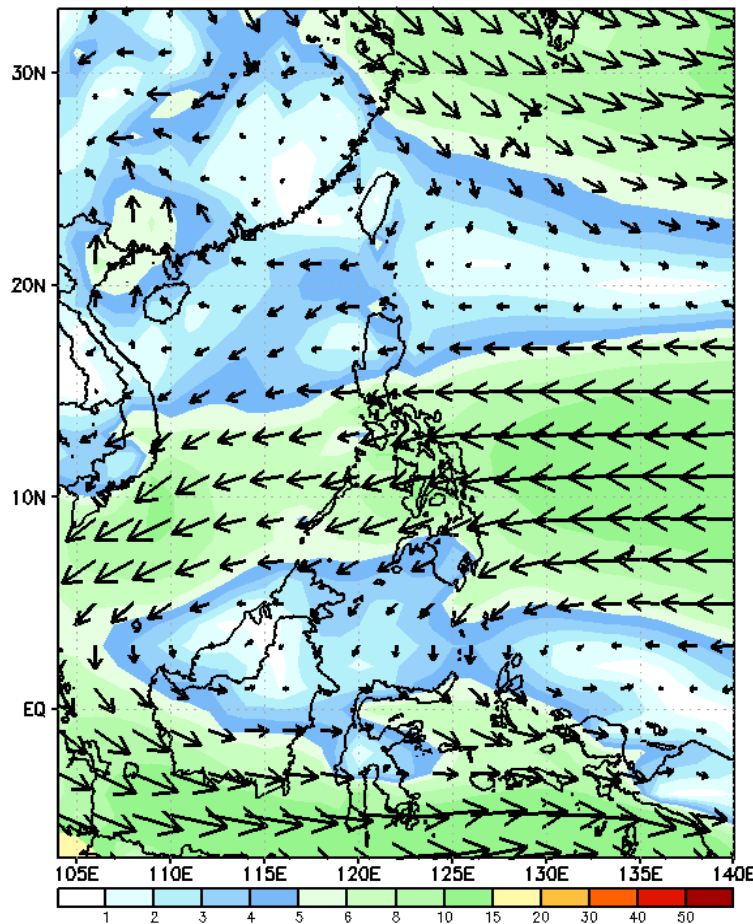
Week 1 & Week 2 Forecast for the Philippines using GEFS Model



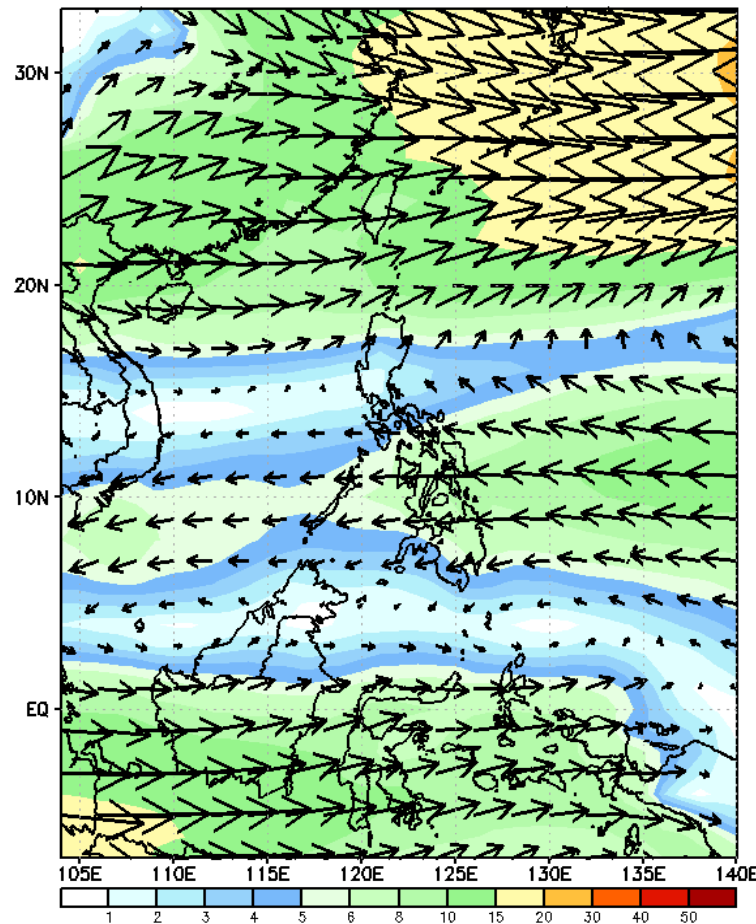
GEFS Week-1 Wind Forecasts:

Week 1: Jan 31- Feb 06, 2025

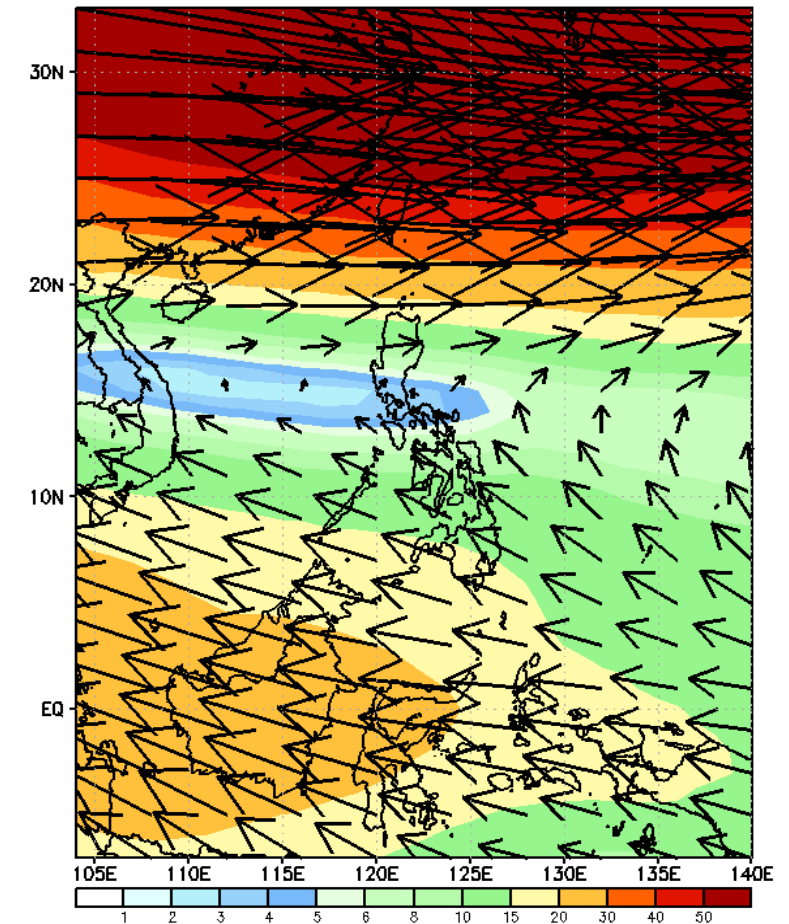
GEFS Week-1 850-hPa Wind Total
Valid: 20250131 - 20250206



GEFS Week-1 700-hPa Wind Total
Valid: 20250131 - 20250206

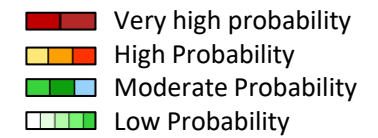


GEFS Week-1 200-hPa Wind Total
Valid: 20250131 - 20250206



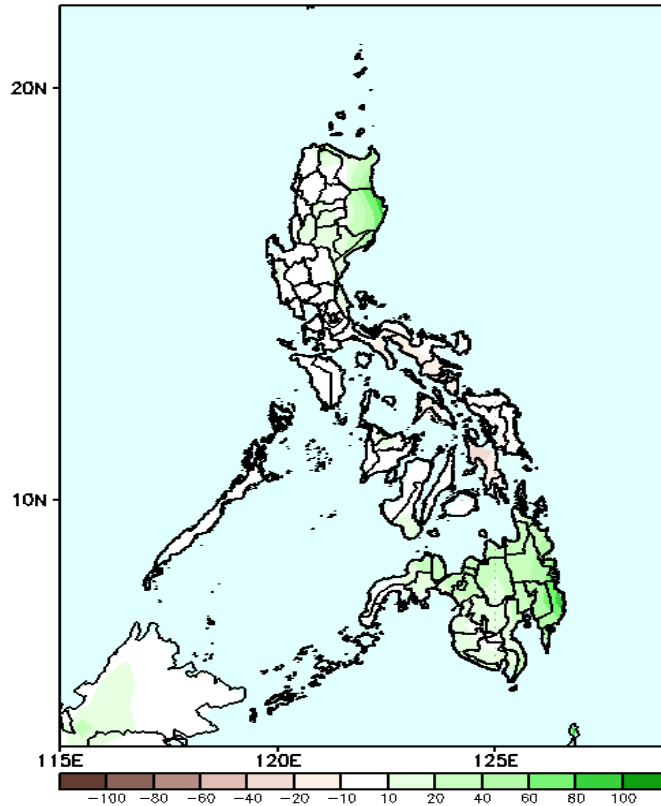
Northeast Monsoon affecting Extreme Northern Luzon while Easterlies affecting the rest of the country during the forecast period

Precipitation Anomaly and Exceedance Probability > 25/50 mm



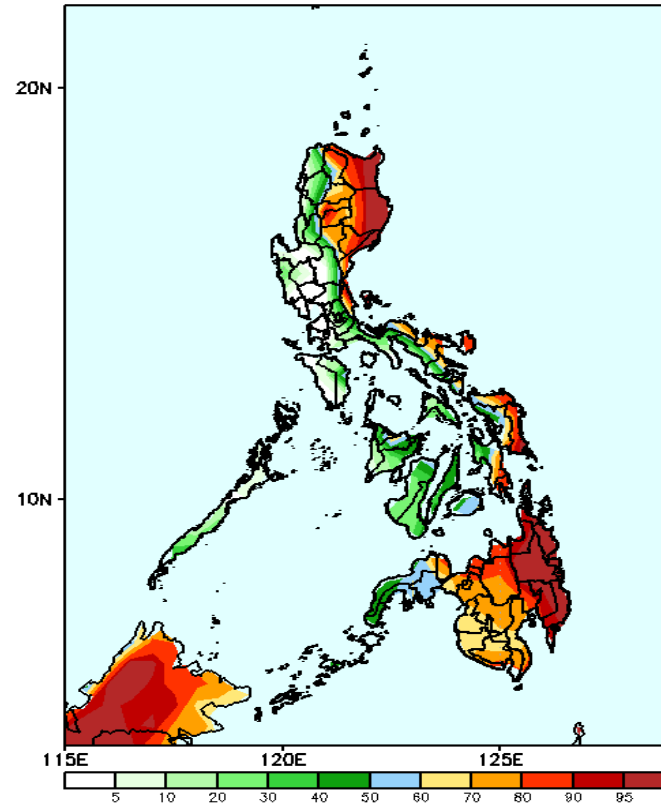
Week 1: Jan 31- Feb 06, 2025

GEFS Week-1 Precip Anomaly
Valid: 20250131 - 20250206



Increase of rainfall of 10-50mm is expected in Cagayan, Isabela, Aurora and most parts of Mindanao.

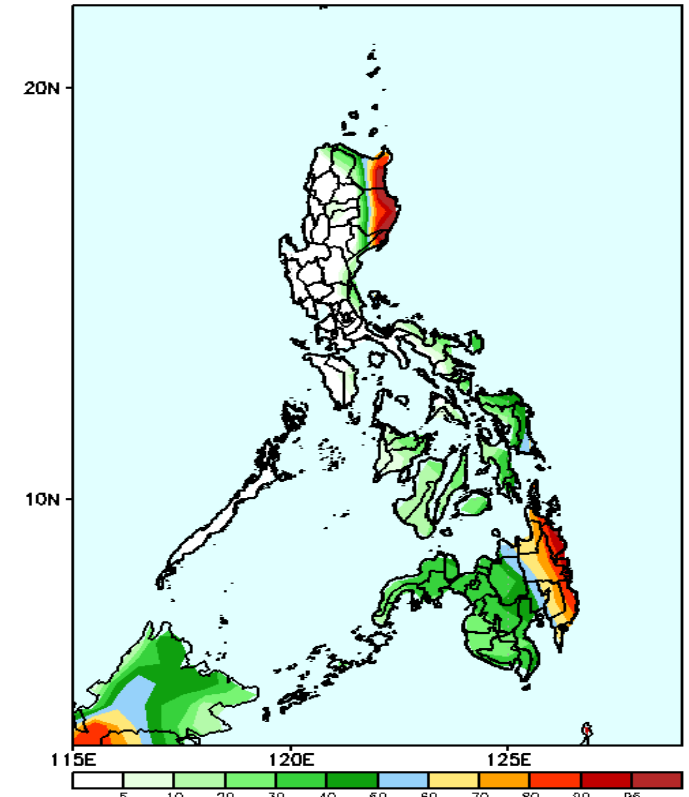
GEFS Week-1 Exceedance Prob. > 25mm
Valid: 20250131 - 20250206



Probability to Exceed 25mm

- High to very high over Batanes, Apayao, Cagayan, Isabela, and eastern Mindanao;
- Moderate to high over the rest of CAR, Eastern Visayas, Bohol, and the rest of Mindanao;
- Low over the rest of the country

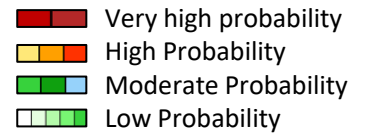
GEFS Week-1 Exceedance Prob. > 50mm
Valid: 20250131 - 20250206



Probability to Exceed 50mm

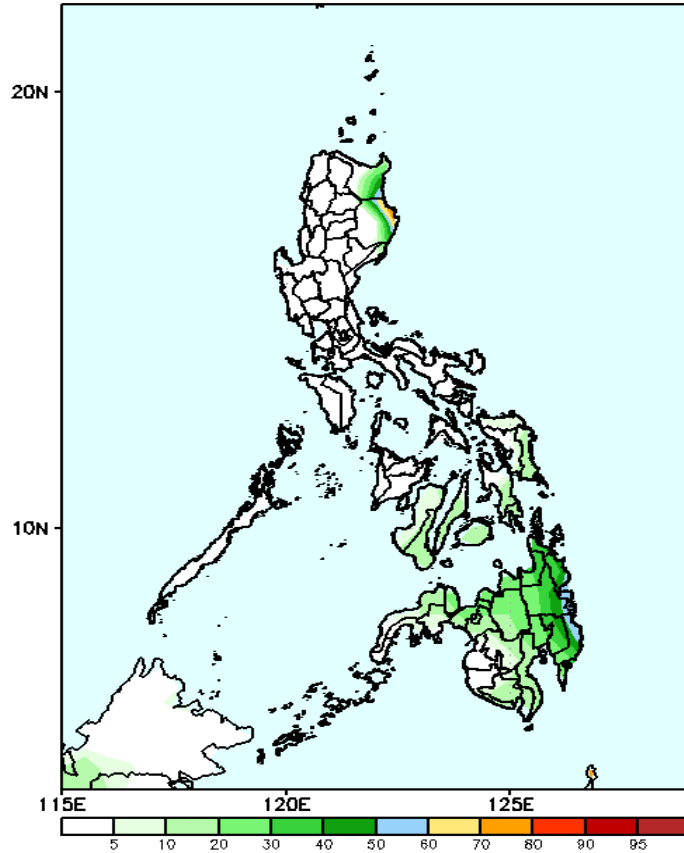
- Moderate to high chance over Cagayan Valley, northern portion of Aurora, and eastern Mindanao;
- Low to moderate over the rest of Mindanao, Visayas, Bicol Region, Quezon, the rest of Aurora, and Apayao.
- Low over the rest of the country.

Exceedance Probability > 100/150/200 mm



Week 1: Jan 31- Feb 06, 2025

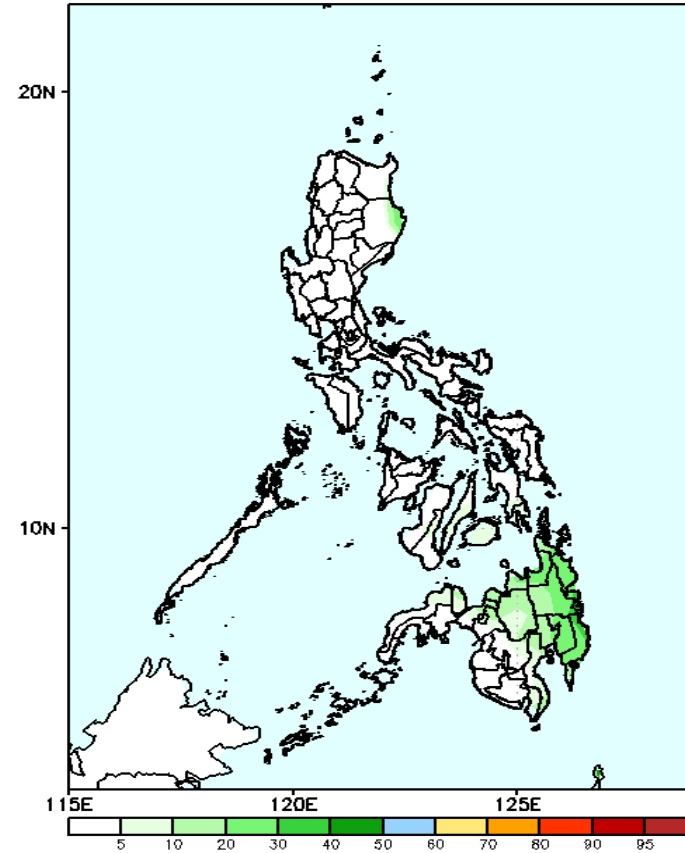
GEFS Week-1 Exceedance Prob. > 100mm
Valid: 20250131 - 20250206



Probability to Exceed 100mm

- Moderate to high over the easternmost of Cagayan and Isabela, and easternmost of Caraga and Davao Region;
- Low over the rest of the country.

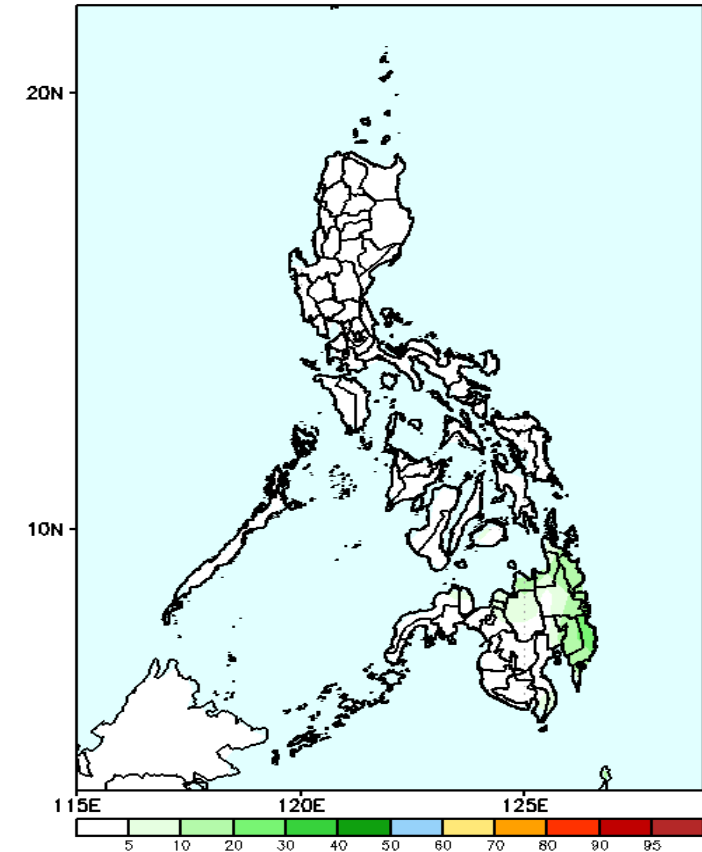
GEFS Week-1 Exceedance Prob. > 150mm
Valid: 20250131 - 20250206



Probability to Exceed 150mm

- Low across the country.

GEFS Week-1 Exceedance Prob. > 200mm
Valid: 20250131 - 20250206



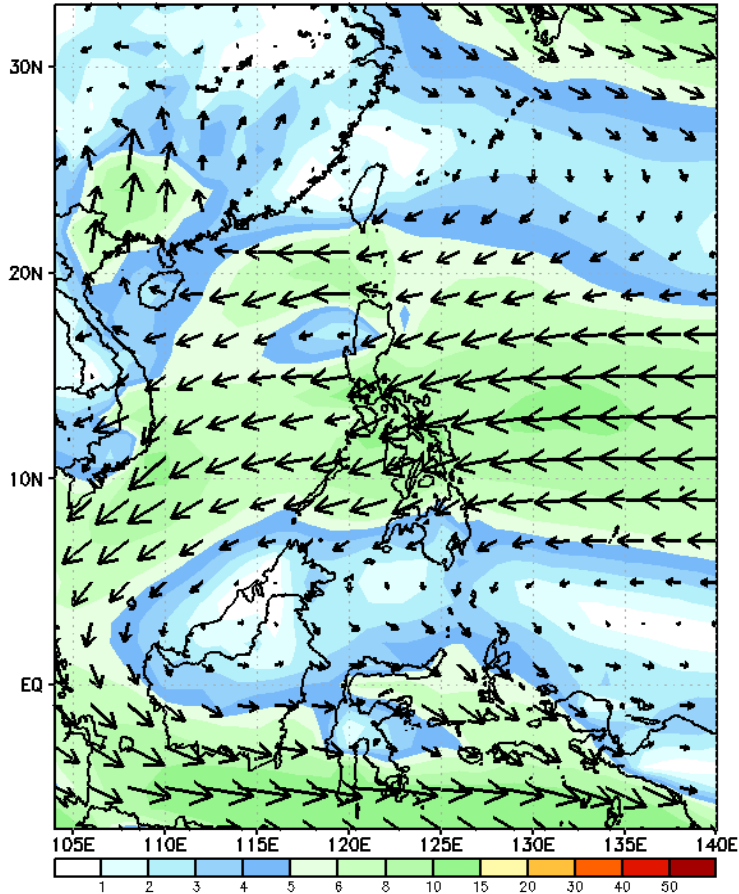
Probability to Exceed 200mm

- Low across the country.

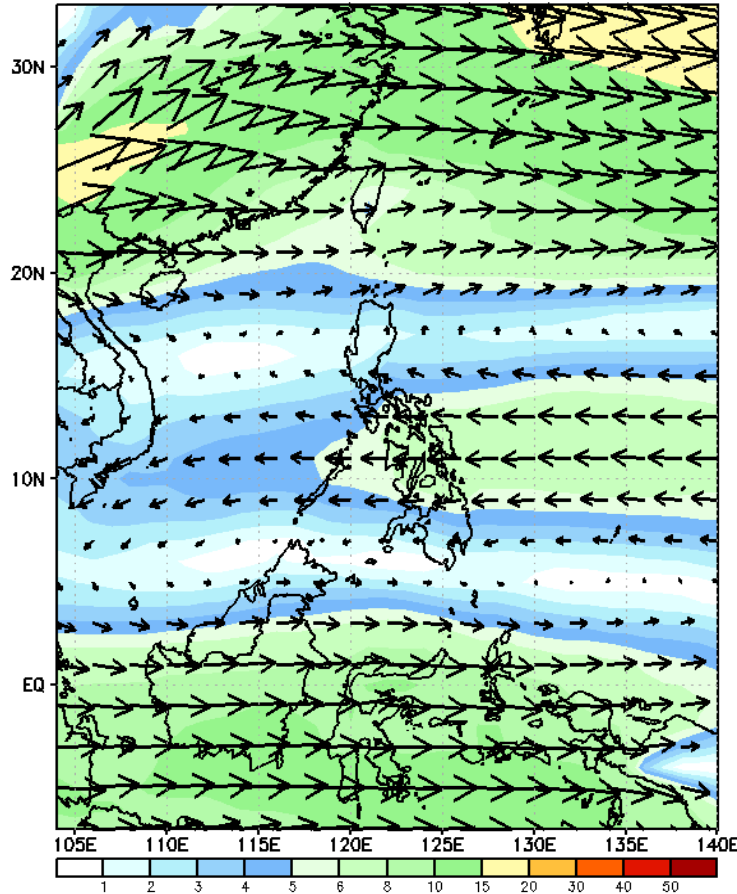
GEFS Week-2 Wind Forecasts:

Week 2: Feb 07-13, 2025

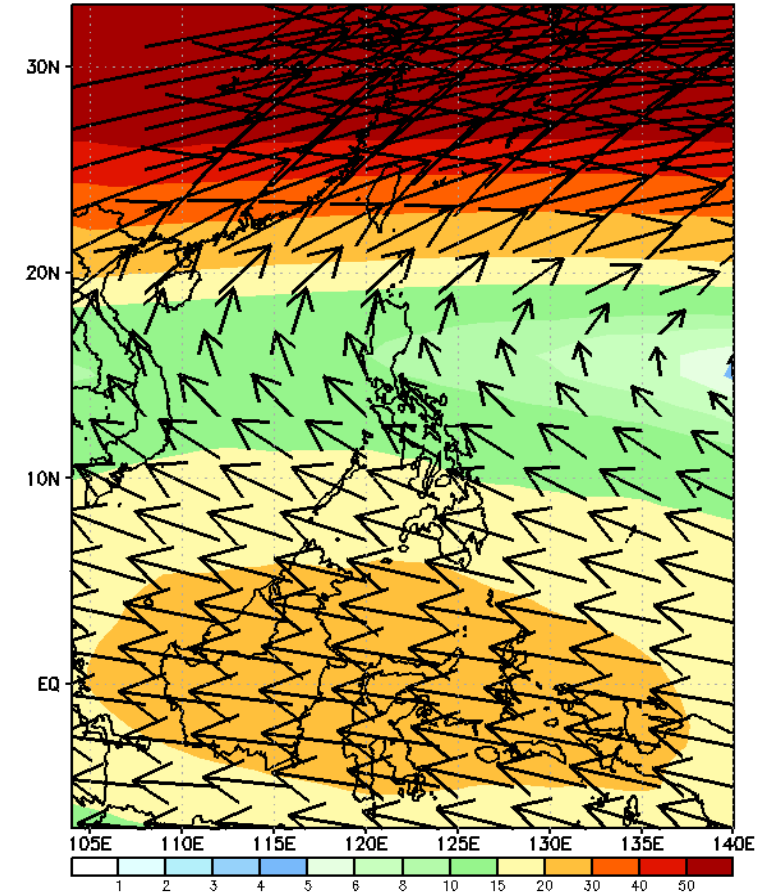
GEFS Week-2 850-hPa Wind Total
Valid: 20250207 - 20250213



GEFS Week-2 700-hPa Wind Total
Valid: 20250207 - 20250213

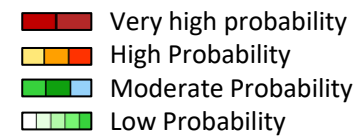


GEFS Week-2 200-hPa Wind Total
Valid: 20250207 - 20250213



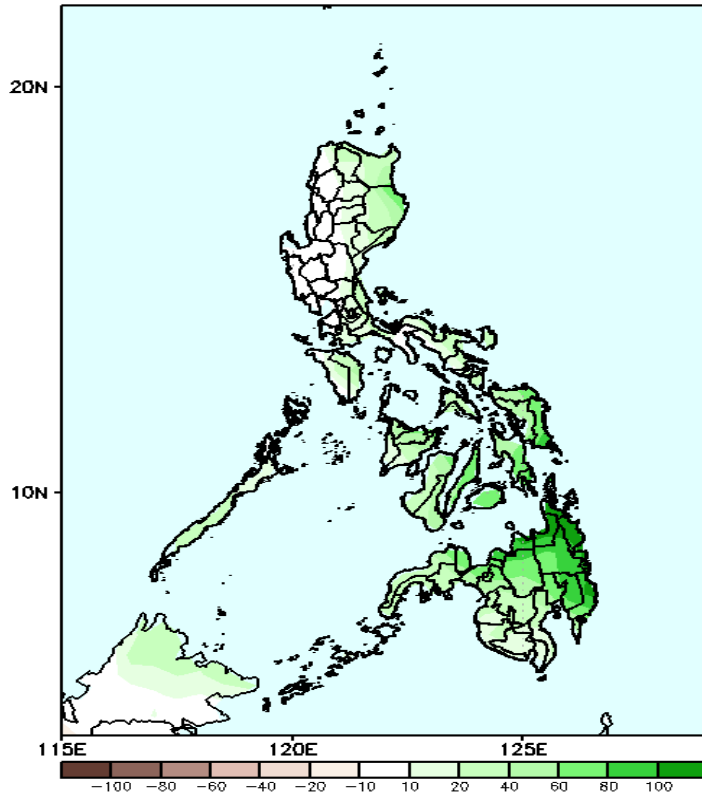
Easterlies will likely affect most parts of the country during the forecast period

Precipitation Anomaly and Exceedance Probability > 25/50 mm



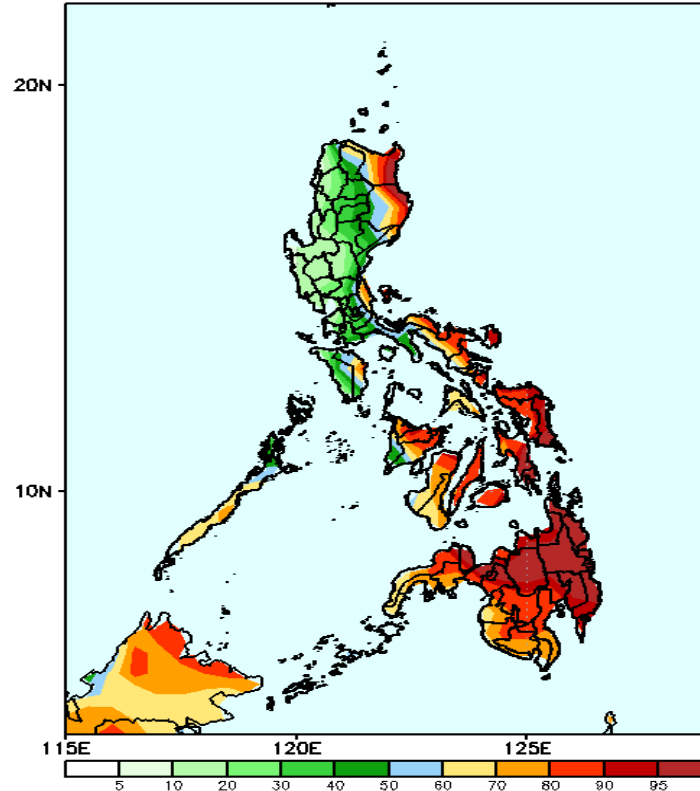
Week 2: Feb 07-13, 2025

GEFS Week-2 Precip Anomaly
Valid: 20250207 - 20250213



Increase of rainfall of 10-60mm is expected in Apayao, Cagayan Valley, southern Luzon, Bicol Region; 60-100mm in Visayas and Mindanao.

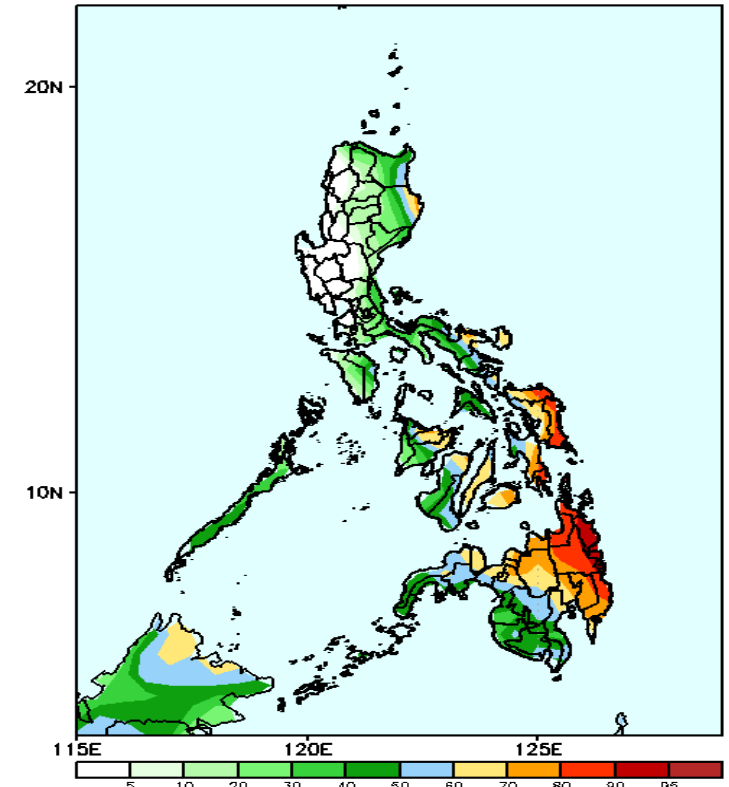
GEFS Week-2 Exceedance Prob. > 25mm
Valid: 20250207 - 20250213



Probability to Exceed 25mm

- High to very high over Batanes, Cagayan, eastern parts of Isabela, Bicol Region, Visayas and Mindanao;
- Moderate to high over the rest of Luzon.

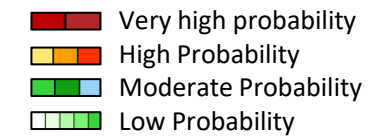
GEFS Week-2 Exceedance Prob. > 50mm
Valid: 20250207 - 20250213



Probability to Exceed 50mm

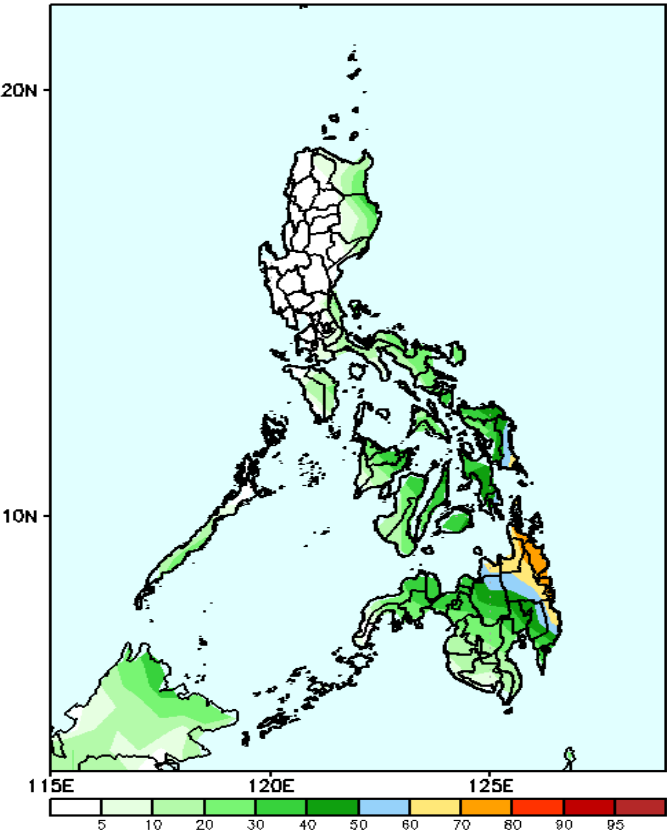
- Moderate to high chance over Cagayan, Isabela, Quezon, Bicol Region, most of MIMAROPA, Visayas, and Mindanao.
- Low to moderate over the rest of Luzon.

Exceedance Probability > 100/150/200 mm



Week 2: Feb 07-13, 2025

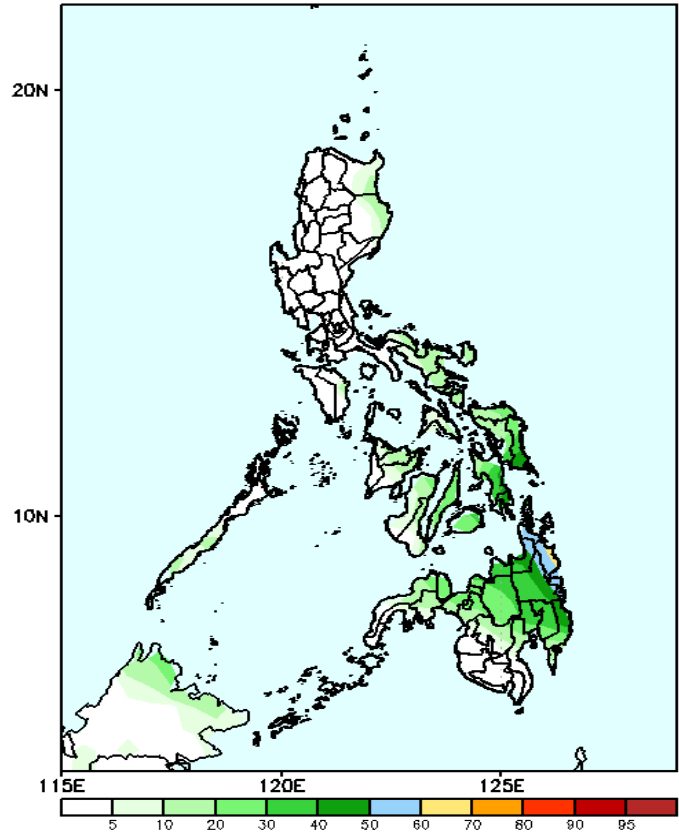
GEFS Week-2 Exceedance Prob. > 100mm
Valid: 20250207 - 20250213



Probability to Exceed 100mm

- Moderate to high chance over Caraga, Northern Mindanao, Davao de Oro, and Davao Oriental;
- Low to moderate probability over the rest of Visayas, Mindanao, and Southern Luzon;
- Low over the rest of Luzon.

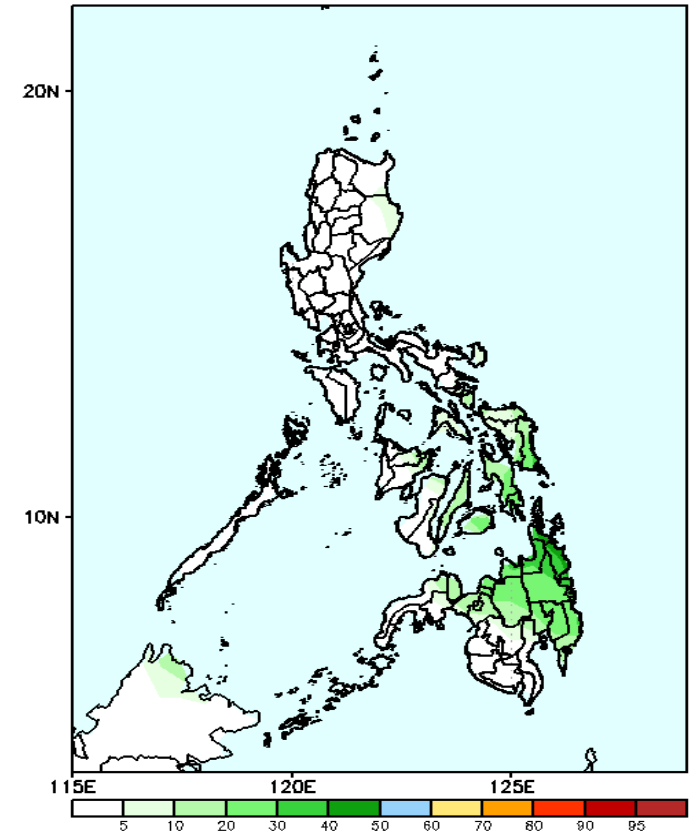
GEFS Week-2 Exceedance Prob. > 150mm
Valid: 20250207 - 20250213



Probability to Exceed 150mm

- Moderate to high over Surigao Provinces and Agusan del Norte;
- Low to moderate over Eastern Visayas and the rest of Mindanao;
- Low over the rest of the country.

GEFS Week-2 Exceedance Prob. > 200mm
Valid: 20250207 - 20250213

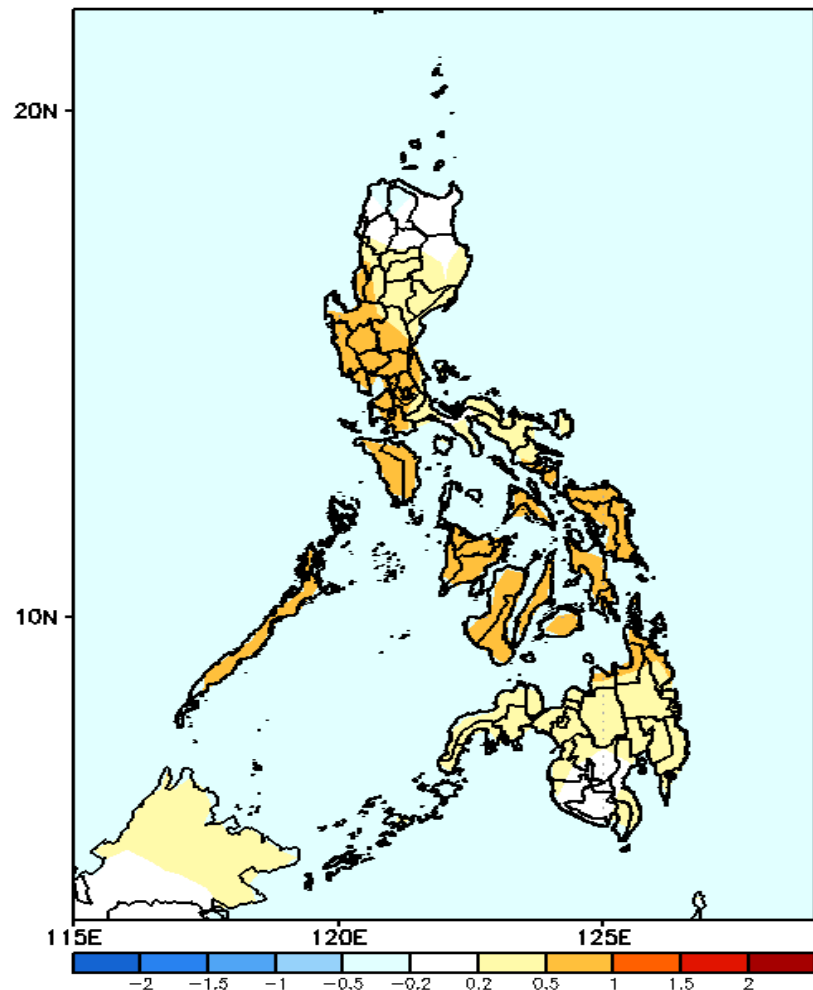


Probability to Exceed 200mm

- Moderate to high over Caraga and the southern parts of Southern Leyte and Eastern Samar;
- Low to moderate chance over Southern Luzon, Visayas, and the rest of Mindanao.
- Low over the rest of Luzon.

GEFS Week-1 & 2 Forecasts: T2m Anomaly

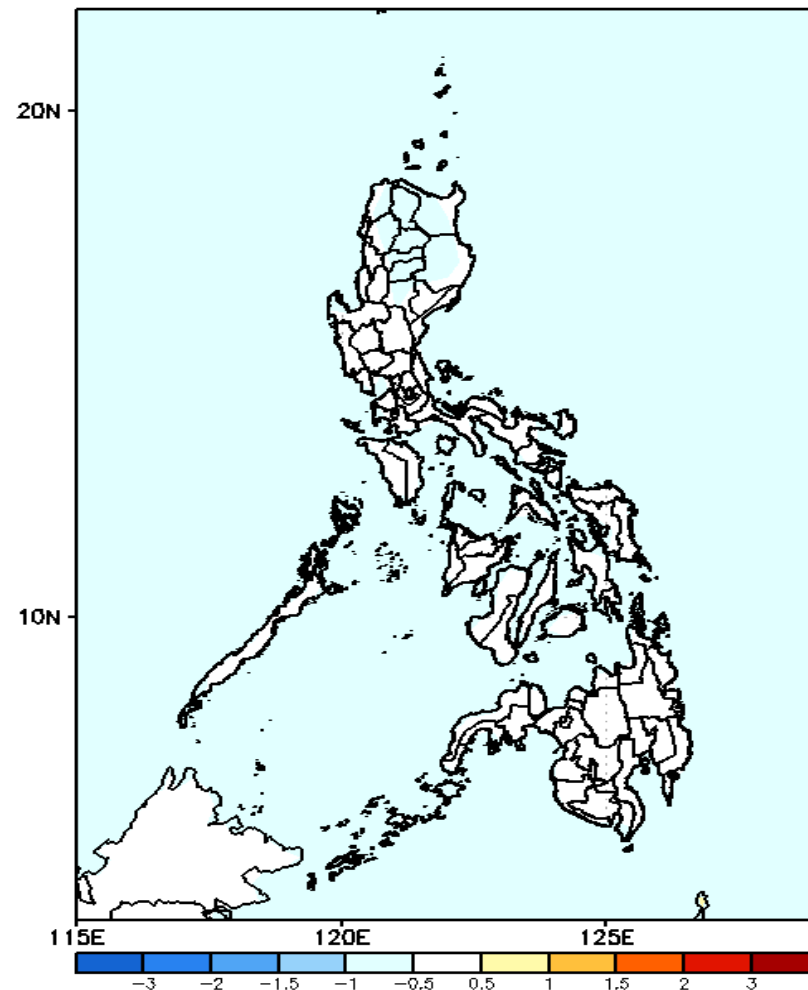
GEFS Week-1 T2m Anomaly
Valid: 20250131 - 20250206



2m Temperature Week 1: Jan 31- Feb 06, 2025

Near to warmer than average surface air temperature will likely be experienced in most parts of the country.

GEFS Week-2 T2m Anomaly
Valid: 20250207 - 20250213



2m Temperature Week 2: Feb 07-13, 2025

Near to slightly cooler than average surface air temperature will be experienced in most parts of the country.